

Oboe 1

FOLLIE DI DONNA

Walzer

Durata circa 19'50"  
Grado 4,5

Amilcare Ponchielli (1834 - 1886) Op. 122  
Versione per banda sinfonica di Emiliano Gusperti

Andante moderato (♩. = 60)

6

1-6

pp

14

poco rall.

4

16-19

Walzer n° 1 (♩ = 200)

4

21-24

25

1

3

28-30

pp

34

4

37-40

1

pp

44

1

mf

51

1.

2.

3

54-56

p

59

tr

3

62-64

p

68

tr

1.

2.

Walzer n° 2

2

71-72

f

75-76

2

79-80

2

tr

pp

84

1.

2.

1

17

89-105

1.

2

106-107

108 **Walzer n° 3**

2. 1. *p con espressione* 113-116 *p*

120 1. 2.

5 127-131 *mf* 6 134-139 *mf*

141 1. 2. **Walzer n° 4** 3 14 144-146 147-160

161 *p* *mf*

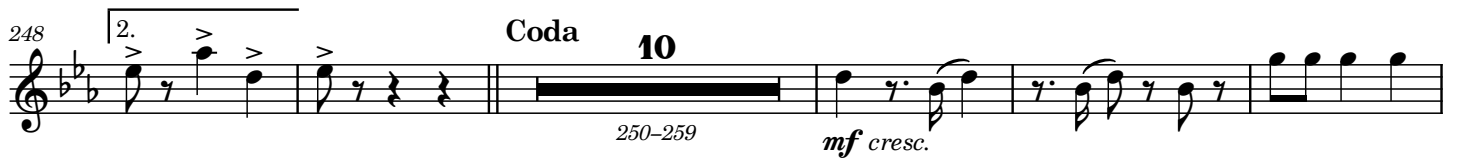
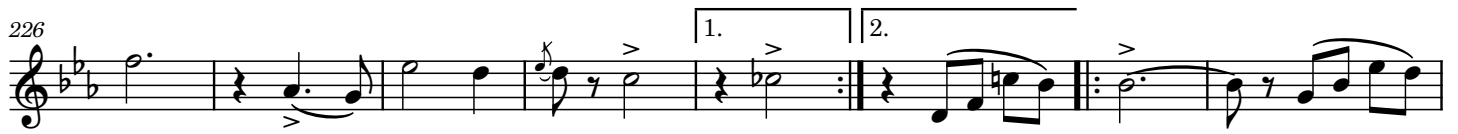
167 1. 2. 1

11 173-183 *p* *mf* *pp* *tr*

8 189-196 *pp legato* 1.

204 2. **Walzer n° 5** *p*

211 *f* *p*



384

384